



Magswitch Technology, Inc.  
 1355 Horizon Ave  
 Lafayette, CO 80026  
 Magswitch.com.au  
 303-468-0662

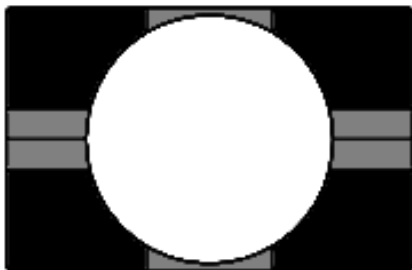
# Magswitch MagSquare 165

## P/N: 8100494

Welders and fabricators are raving about all the uses, convenience and time savings with Magswitch MagSquares. MagSquares are extremely powerful magnetic blocks with strong holding force available on all sides. Welders have never enjoyed this complete control over incredibly strong magnets. You can precisely position the MagSquare and material, and then turn the magnet on. MagSquares feature multi-plane workholding capability. It takes away the need for time consuming manual clamping on so many jobs, and works anywhere there is steel; you don't need an edge like you do with C-Clamps. All MagSquares are machined at 90 degrees, have pre tapped holes on all sides for mounting tools, jigs and fixtures. Fast 180 degree turn of the knob turns the MagSquare on and off. When off, nothing sticks to them. Once you understand all the uses, the time savings in set ups, and the ability to control these powerful magnetic blocks – you will want the entire range.



**WARNING!**  
**Do Not Operate Unless In**  
**Contact With Ferrous Target**



**WORKING SURFACE**  
**BLACK=BEST**  
**GRAY=MODERATE**

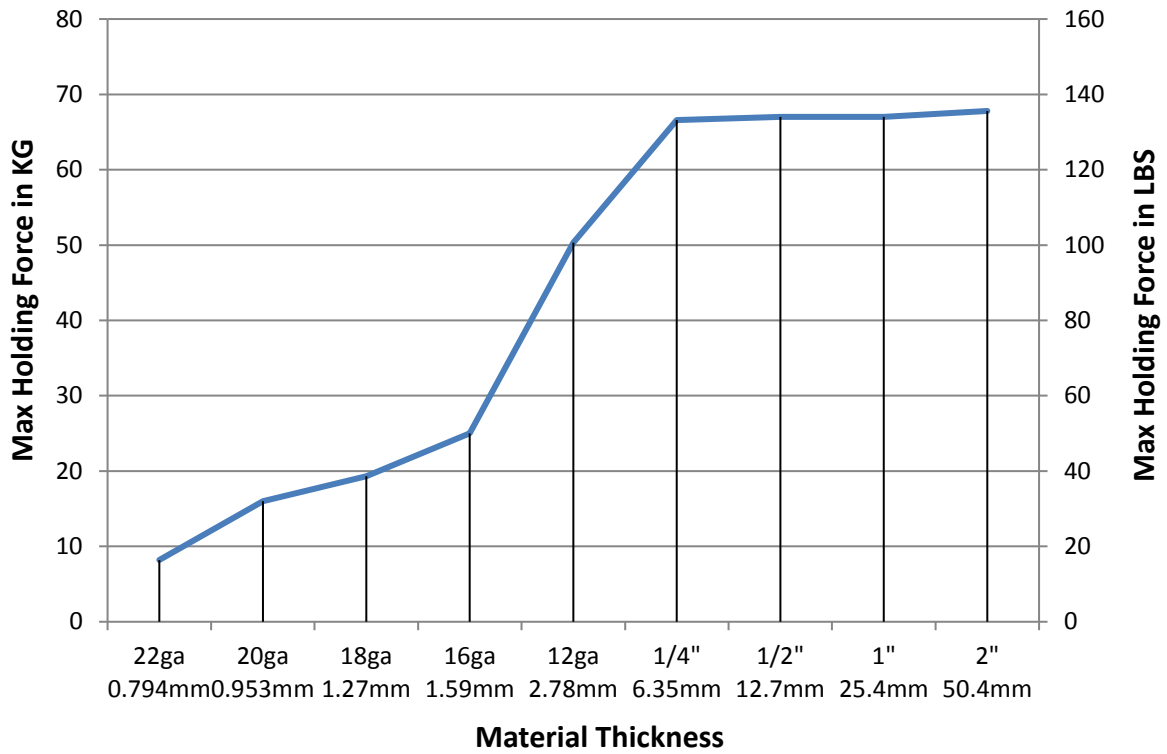
SPECIFICATIONS	
<b>P/N: 8100494 - MAGSWITCH MagSquare 165</b>	
Max Breakaway*	150 lbs/68 kg
Full Saturation Thickness	0.25"/ 6.35 mm
2:1 Shear Working Load*	18.5 lbs/8.4 kg
Net Weight	0.7 lbs/0.32 kg
Overall Height	64.25 mm
Magnetic Pole Footprint	48mm x 31mm



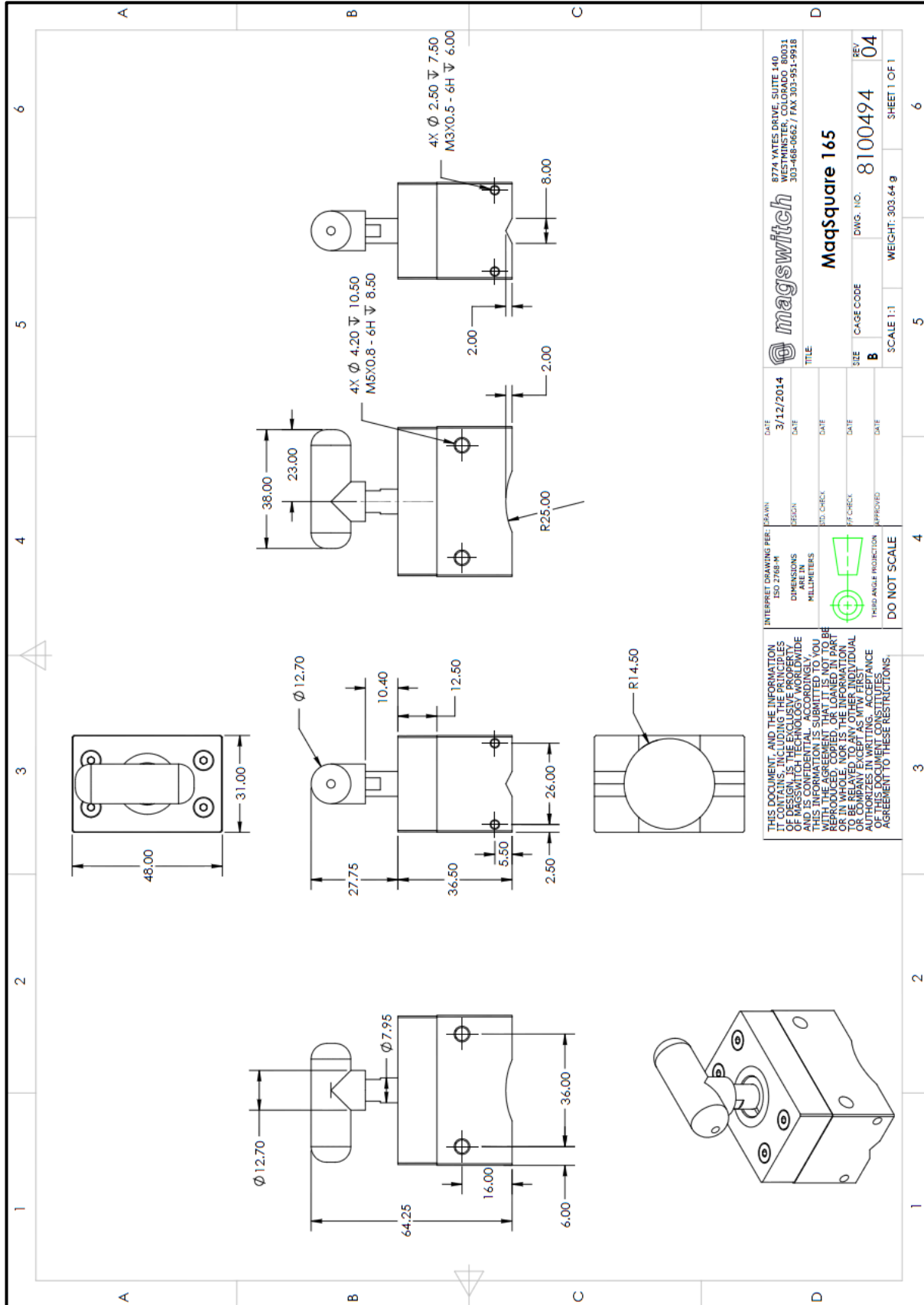
Part Number 110918  
 Revision Date: April 3, 2017

\* Max Breakaway determined in laboratory environment on 2" thick SAE1018 Steel with surface roughness 63 micro inches. Many factors contribute to the actual breakaway force in each application. Always test the magswitch in each application before deployment. Refer to the magswitch information booklet for more information.

### Magswitch MagSquare 165 Breakaway vs. Thickness



Part Number 110918  
Revision Date: April 3, 2017



<p>THIS DOCUMENT AND THE INFORMATION IT CONTAINS, INCLUDING THE PRINCIPLES OF DESIGN, IS THE EXCLUSIVE PROPERTY OF MAGSWITCH TECHNOLOGY WORLDWIDE AND IS CONFIDENTIAL. ANY REUSE OR DISCLOSURE OF THIS INFORMATION IS STRICTLY PROHIBITED WITHOUT THE AGREEMENT THAT IT IS NOT TO BE REPRODUCED OR TRANSMITTED IN ANY FORM OR BY ANY MEANS, ELECTRONIC OR MECHANICAL, INCLUDING PHOTOCOPYING, RECORDING, OR BY ANY INFORMATION STORAGE AND RETRIEVAL SYSTEM. THIS INFORMATION IS SUBMITTED TO YOU WITH THE AGREEMENT THAT IT IS NOT TO BE REPRODUCED OR TRANSMITTED IN ANY FORM OR BY ANY MEANS, ELECTRONIC OR MECHANICAL, INCLUDING PHOTOCOPYING, RECORDING, OR BY ANY INFORMATION STORAGE AND RETRIEVAL SYSTEM. THIS INFORMATION IS SUBMITTED TO YOU WITH THE AGREEMENT THAT IT IS NOT TO BE REPRODUCED OR TRANSMITTED IN ANY FORM OR BY ANY MEANS, ELECTRONIC OR MECHANICAL, INCLUDING PHOTOCOPYING, RECORDING, OR BY ANY INFORMATION STORAGE AND RETRIEVAL SYSTEM. THIS INFORMATION IS SUBMITTED TO YOU WITH THE AGREEMENT THAT IT IS NOT TO BE REPRODUCED OR TRANSMITTED IN ANY FORM OR BY ANY MEANS, ELECTRONIC OR MECHANICAL, INCLUDING PHOTOCOPYING, RECORDING, OR BY ANY INFORMATION STORAGE AND RETRIEVAL SYSTEM.</p>		<p>DATE: 3/12/2014</p>	<p>8774 YATES DRIVE, SUITE 140          WILSONVILLE, OR 97158          303-468-9662 / FAX 303-951-9918</p>
<p>INTERPRET DRAWING PER: IS0 2768-M</p>	<p>DESIGN: [ ]</p>	<p>DATE: [ ]</p>	<p><b>magswitch</b></p>
<p>DIMENSIONS ARE IN MILLIMETERS</p>	<p>3D CHECK: [ ]</p>	<p>DATE: [ ]</p>	<p><b>MaqSquare 165</b></p>
<p>THIRD ANGLE PROJECTION</p>	<p>RF CHECK: [ ]</p>	<p>DATE: [ ]</p>	<p>SIZE: B</p>
<p>DO NOT SCALE</p>	<p>APPROVES: [ ]</p>	<p>DATE: [ ]</p>	<p>DWG. NO. 8100494</p>
<p>SCALE: 1:1</p>	<p>WEIGHT: 303.64 g</p>	<p>SHEET 1 OF 1</p>	<p>REV 04</p>



Part Number 110918  
 Revision Date: April 3, 2017