

A

B

C

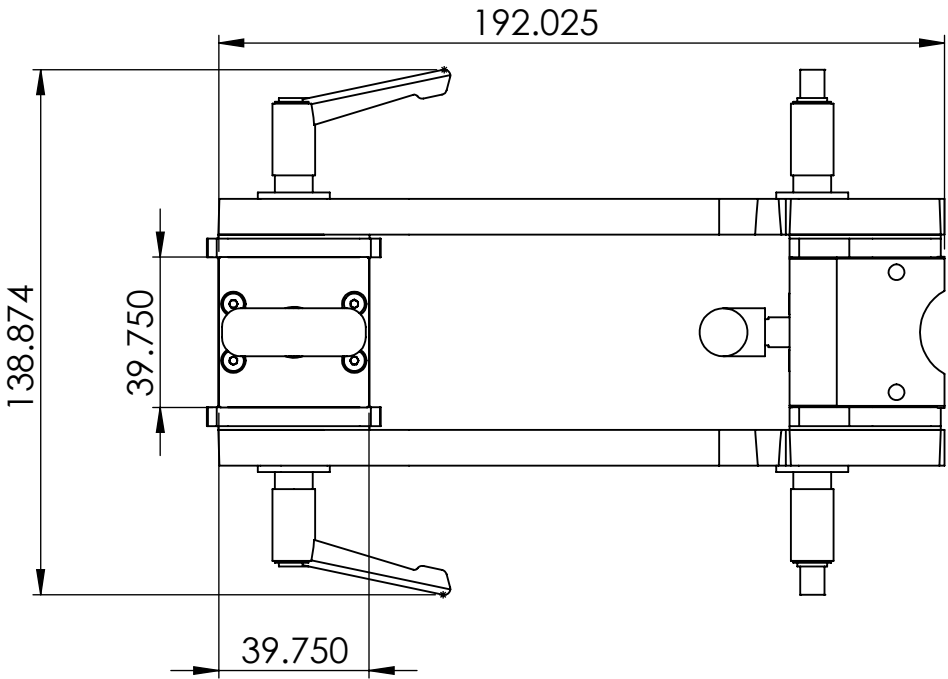
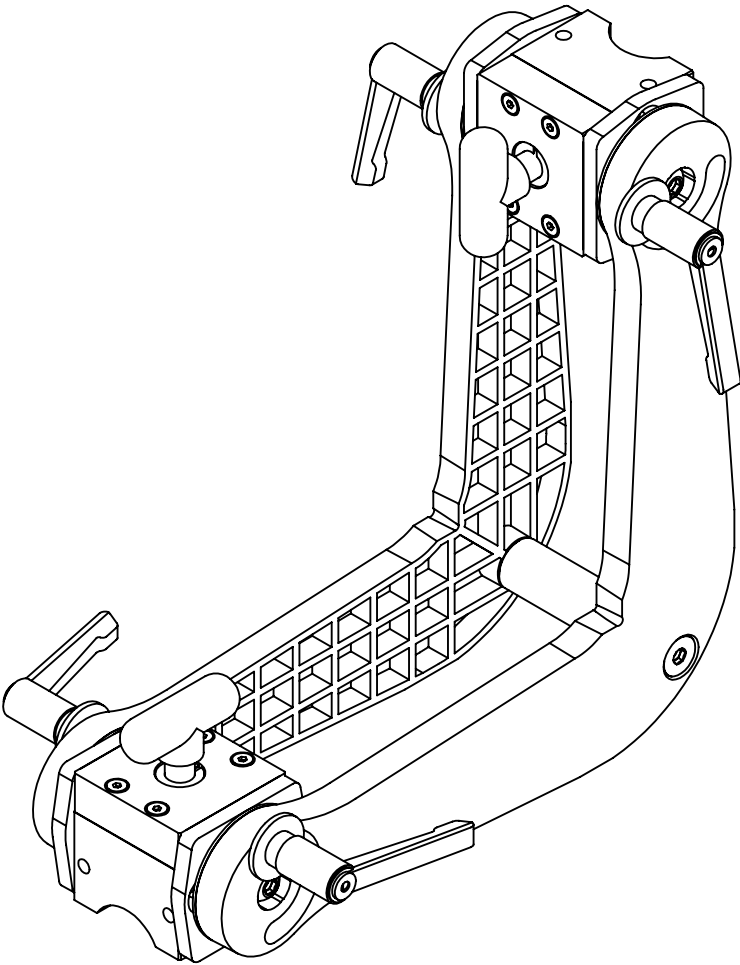
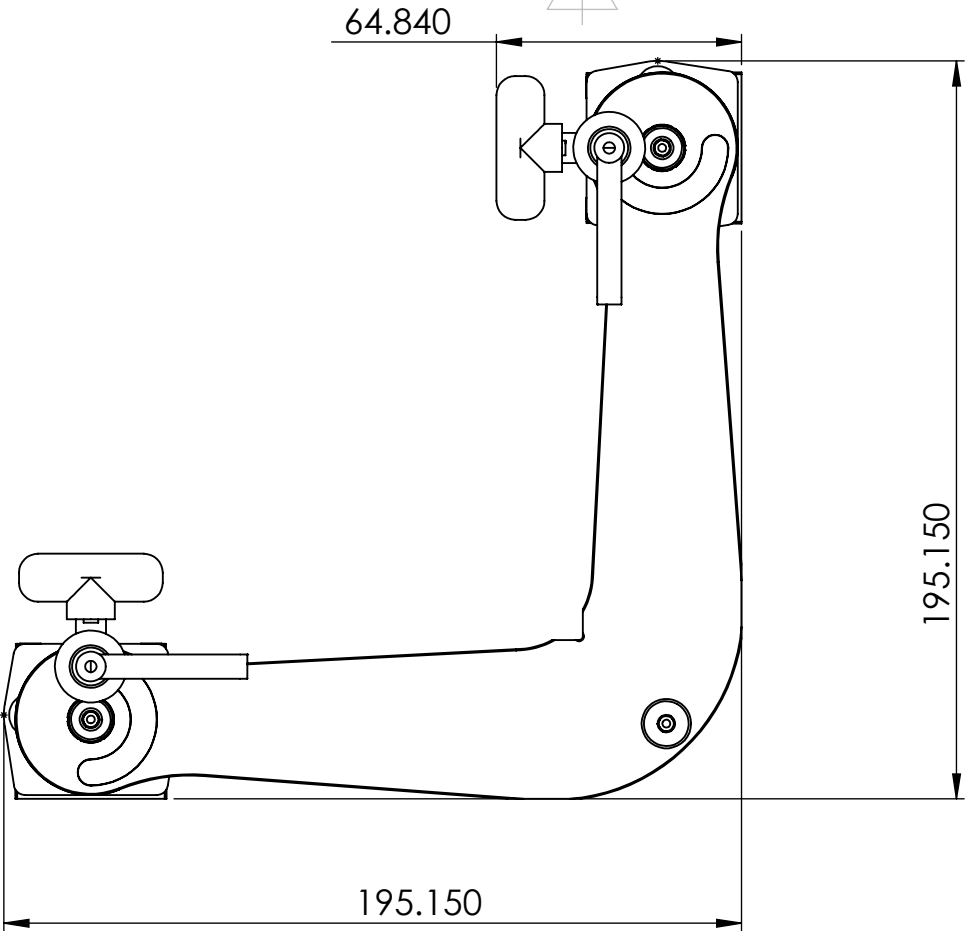
D

A

B

C

D



NOTES: UNLESS OTHERWISE SPECIFIED

1. INSPECT ST DIMENSIONS PER ISO 2768-M
2. 1° DRAFT ALLOWED FOR CASTING
3. REMOVE ALL BURRS AND BREAK SHARP EDGES.
4. IF CAST, TUMBLE DEBUR AFTER CASTING
5. FOR GENERAL DIMENSIONS NOT SPECIFIED SEE 3D CAD DATA
6. SURFACE ROUGHNESS

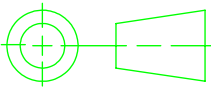
Surface Finish:

MATERIAL:

THIS DOCUMENT, AND THE INFORMATION IT CONTAINS, INCLUDING THE PRINCIPLES OF DESIGN, IS THE EXCLUSIVE PROPERTY OF MAGSWITCH TECHNOLOGY WORLDWIDE AND IS CONFIDENTIAL. ACCORDINGLY, THIS INFORMATION IS SUBMITTED TO YOU WITH THE AGREEMENT THAT IT IS NOT TO BE REPRODUCED, COPIED, OR LOANED IN PART OR IN WHOLE, NOR IS THE INFORMATION TO BE RELAYED TO ANY OTHER INDIVIDUAL OR COMPANY EXCEPT AS MTW FIRST AUTHORIZES IN WRITING. ACCEPTANCE OF THIS DOCUMENT CONSTITUTES AGREEMENT TO THESE RESTRICTIONS.

INTERPRET DRAWING PER:
ISO 2768-M

DIMENSIONS
ARE IN
MILLIMETERS



THIRD ANGLE PROJECTION

DO NOT SCALE

DRAWN

DATE

10/15/2013

DESIGN

DATE

STD. CHECK

DATE

F/F CHECK

DATE

APPROVED

DATE



8774 YATES DRIVE, SUITE 140
WESTMINSTER, COLORADO 80031
303-468-0662 / FAX 303-951-9918

TITLE:

Magswitch BoomerAngle 150

SIZE

B

CAGE CODE

DWG. NO.

8100091

REV

02

SCALE 1:5

WEIGHT: g

SHEET 1 OF 1