



Magswitch Technology, Inc.
 8774 Yates Dr. Suite 140
 Westminster, CO 80031
 Magswitch.com.au
 303-468-0662

d

Magswitch Pivot Angle 200

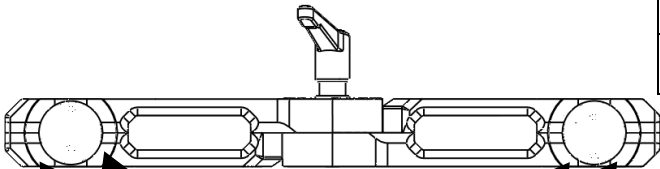
P/N: 8100367

The Magswitch Pivot Angle offers a range of angles from 22 to 270 degrees. Each axis features a Magswitch with a 200 lbs (90kg) hold capability. A single pivot point is located on the elbow. The elbow joint locks and unlocks quickly with a lever. The dial on the elbow features indicators every 5 degrees. On each axis a Magswitch is exposed on a side to enable the tool to secure to a table or wall, while simultaneously holding the work piece. Perfect for repetitive work on uncommon angles.



WARNING!
Do Not Operate Unless In
Contact With Ferrous Target

SPECIFICATIONS	
P/N: 8100367 - MAGSWITCH Pivot Angle 200	
Max Breakaway*	200 lbs/90 kg
Full Saturation Thickness	3/16" /4.75 mm
Max Safe Shear*	48.4 lbs/22 kg
Net Weight	3.5 lbs/1.6 kg
Overall Height	90 mm
Magnetic Pole Footprint	41.25mm x 56mm

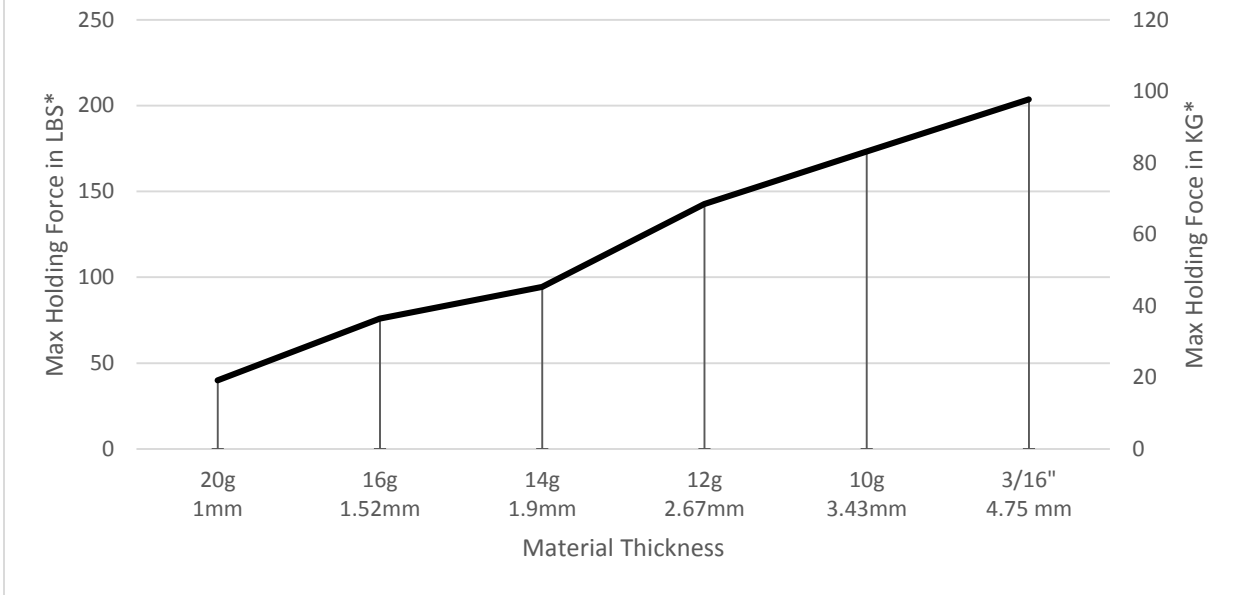


WORKING SURFACE

* Max Breakaway determined in laboratory environment on 2" thick SAE1018 Steel with surface roughness 63 micro inches. Many factors contribute to the actual breakaway force in each application. Always test the magswitch in each application before deployment. Refer to the magswitch information booklet for more information.



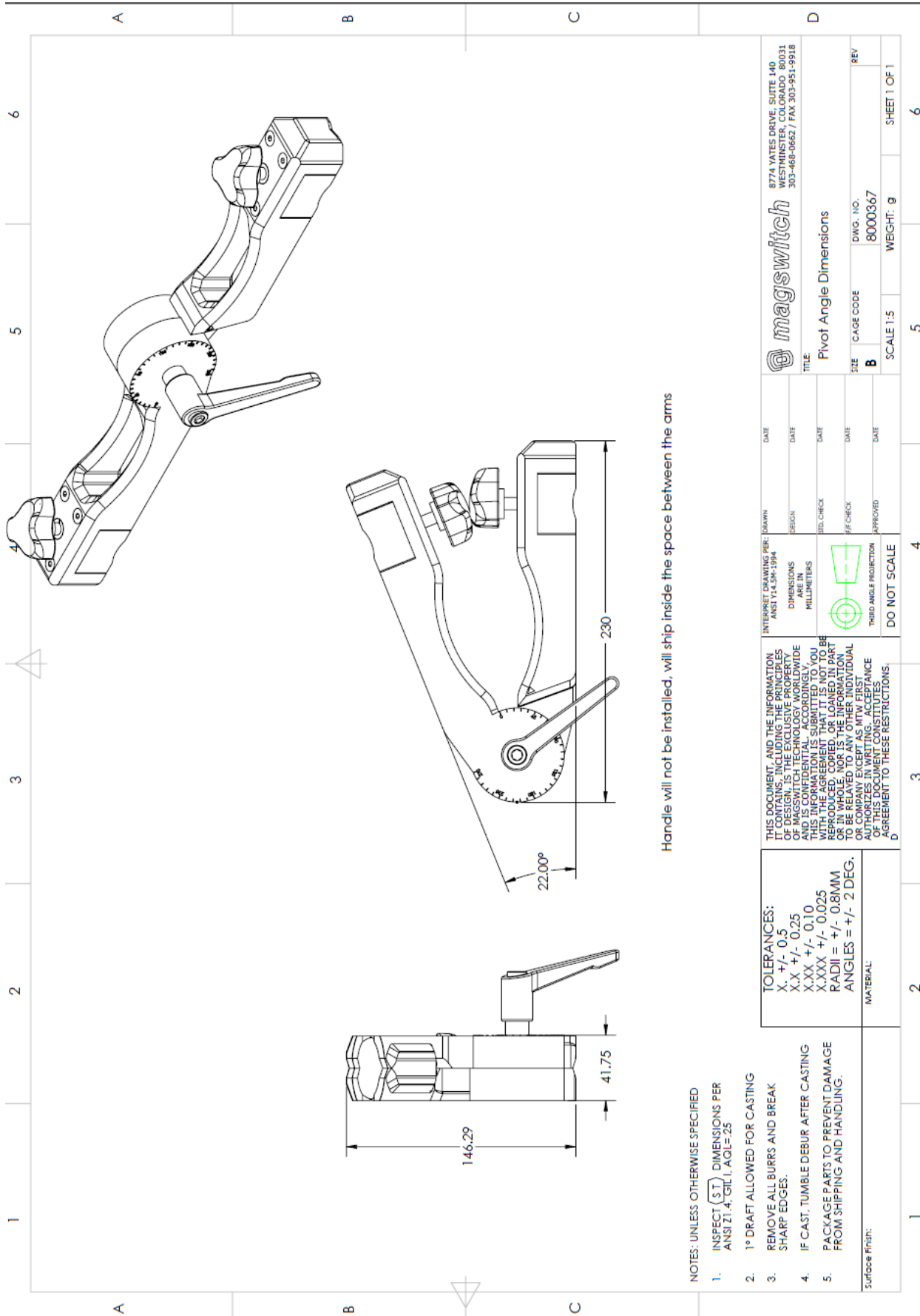
Magswitch Pivot Angle 200 Breakaway Data vs. Thickness



Part Number 110692
Revision Date: June 26, 2012



Part Number 110692
 Revision Date: June 26, 2012



Handle will not be installed, will ship inside the space between the arms

NOTES: UNLESS OTHERWISE SPECIFIED

1. INSPECT (S_T) DIMENSIONS PER ANSIZ1.4, G1, AGL=25
2. 1° DRAFT ALLOWED FOR CASTING
3. REMOVE ALL BURRS AND BREAK SHARP EDGES.
4. IF CAST, TUMBLE DEBUR AFTER CASTING
5. PACKAGE PARTS TO PREVENT DAMAGE FROM SHIPPING AND HANDLING.

Surface finish:

TOLERANCES:

- X, +/- 0.5
- XX +/- 0.25
- XXX +/- 0.10
- XXXX +/- 0.025
- RADII = +/- 0.8MM
- ANGLES = +/- 2 DEG.

MATERIAL:

THIS DOCUMENT, AND THE INFORMATION IT CONTAINS, INCLUDING THE PRINCIPLES OF MASS SWITCH TECHNOLOGY, WORLDWIDE AND IS CONFIDENTIAL, ACCORDINGLY, THIS INFORMATION IS SUBMITTED TO YOU ON A NON-CONFIDENTIAL BASIS. IT IS NOT TO BE REPRODUCED, COPIED, OR LOANED IN PART OR IN WHOLE, NOR IS THE INFORMATION TO BE RELAYED TO ANY OTHER INDIVIDUAL WITHOUT THE WRITTEN PERMISSION OF THE AUTHOR. ANY VIOLATION OF THESE RESTRICTIONS OF THIS DOCUMENT CONSTITUTES AN AGREEMENT TO THESE RESTRICTIONS.

INTERNET DRAWING PER: DRAWN ANSIZ 1:4, 2:5, 4:5, 6:5, 8:5, 10:5, 12:5, 14:5, 16:5, 18:5, 20:5, 22:5, 24:5, 26:5, 28:5, 30:5, 32:5, 34:5, 36:5, 38:5, 40:5, 42:5, 44:5, 46:5, 48:5, 50:5, 52:5, 54:5, 56:5, 58:5, 60:5, 62:5, 64:5, 66:5, 68:5, 70:5, 72:5, 74:5, 76:5, 78:5, 80:5, 82:5, 84:5, 86:5, 88:5, 90:5, 92:5, 94:5, 96:5, 98:5, 100:5
 DIMENSIONS ARE IN MILLIMETERS
 THIRD ANGLE PROJECTION
 DO NOT SCALE

DATE	DATE	DATE	DATE	DATE
DESIGN	DESIGN	DESIGN	DESIGN	DESIGN
REV. CHECK	REV. CHECK	REV. CHECK	REV. CHECK	REV. CHECK
APPROVED	APPROVED	APPROVED	APPROVED	APPROVED

magswitch
 8774 YATES DRIVE SUITE 140
 WESTMINSTER, COLORADO 80031
 303-468-0662 / FAX 303-951-9918

TITLE: Pivot Angle Dimensions
 DWG. NO. 8000367
 SCALE 1:5 WEIGHT: g
 SHEET 1 OF 1